



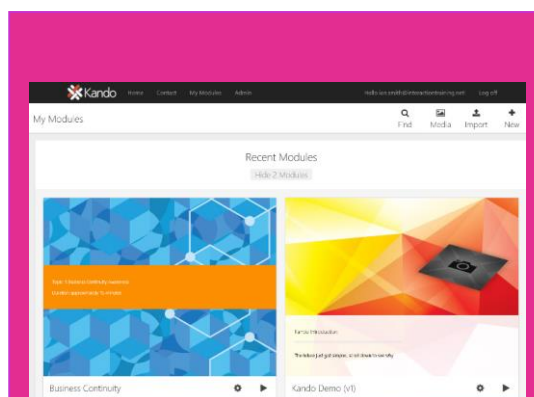
Future-proof your authoring and curation process

Essentially, Kando is a platform that enables organisations to access and share the knowledge, experience and expertise of everyone in your workplace - every subject matter expert, all the people leaders and learning professionals and every team member across your organisation. It eliminates traditionally painful aspects of content design, approval, curation and maintenance with a solution that is instantly available and familiar.

We guarantee that, irrespective of technical or design experience, Kando will ensure the quality of every published item is fresh and professional, delivering consistent learning experiences to your entire audience. In fact, you will never again need to overhaul your content ranges because Kando takes care of that for you in terms of both styling and technical requirements.

Kando consciously separates the content assets (the images, audio, text, questions, quizzes, video's, etc.) that your SMEs understand and manage from the staging aspects of eLearning we understand and manage. Put simply, we present your assets through an ever-evolving palette of professionally-tailored interface templates that tick the boxes you know about and require as well as those that we know about and that will inevitably evolve, for example:

- ✓ Simple rapid template-driven authoring
- ✓ Seamless SME / Stakeholder reviewing
- ✓ In built version control and history
- ✓ Publishing to conventional or remote scorm options
- ✓ Seamless corporate branding
- ✓ Responsive interfaces
- ✓ WCAG 2 compliance
- ✓ Scorm 2.1
- ✓ Granular reporting
- ✓ Future-proofed



"After almost 40 years in eLearning, we certainly know learning technology and the culmination of all that experiences is Kando. Kando represents our grand vision that has now become a reality that every learning profession and especially those most jaded, must see to believe."

Ian Smith, Managing Director



SUPPORT AND SCORM

All online support included at no extra cost. Currently clients have retained the standard 6 a.m. through 9 p.m. support 7 days a week as being adequate. We guarantee and take ownership of the responsibility to ensure that our content runs seamlessly on your LMS (choose between conventional scorm 1.2 or Interaction's breakthrough remote scorm installation. Alternate connection options available...

WCAG 2 (accessibility compliance)

Our courses output to WCAG AA standards by default. Even so, some of our clients found that WCAG does not necessarily go far enough for JAWS users, so our courses actually publish in 2 versions Standard WCAG and flat file. The flat version essentially strips out all non-essential images etc. and displays the content in high contrast black on white text.

In our own platform, we pass a user flag to launch the flat version to users with a JAWS designation. 3rd party platforms can choose to pass such a flag or we can add an option on the launch screen allowing the user to select either version, as required).

FREE BUILD BY OUR SPECIALISTS

We offer to build one 20-minute course per annum per client at no extra cost, provided client is on a current licence of appropriate value. Please contact ian.smith@interactiontraining.net to confirm that you comply with the requirement.

BESPOKE CONTENT DEVELOPMENT

Engaging, interactive learning is a passion. With thousands of hours developing learning, assessments, surveys, product simulations, marketing publications, etc. under our belt, our tools have been honed like no other. The team inside Interaction works alongside resources nurtured with the very best 3rd party developers. These are Australian based specialists who understand what does and does not work and who understand the importance of goal-based learning outcomes. People who know how to get the best out of our tools but are still happy to leave you in control of your treasured learning assets.

PLUS 12 MONTHS FREE ACCESS TO CENTRAL FOR NEW KANDO CUSTOMERS

Rid yourself of LMS pain - contact [Ian Smith](mailto:ian.smith@interactiontraining.net) to confirm your site – Kando Central is changing the profile of learning and you will see it in action. Warning, you will never want to go back to conventional LMS systems after working with Central!

OFF THE SHELF!

Every year, millions of end users in thousands of organisations across the world access our learning titles. The learning is catalogued in a series of ranges, being Ready2Comply, Ready2Work, Ready4Retail and Ready4Management (which is mapped to national qualifications) – as well as our foundation MS Office - PC skills range. The courses can be delivered off-the-shelf or personalised to specific industry or audience needs using our simple authoring tools. Please download our [Product Range brochure](#).



Log in and then click on My Modules...

Our templates deliver seamless truly responsive delivery to any combination of devices that the user audience might be operating, making the most of the device rather than just forcing the content to fit on the screen. The result is that the same content plays perfectly on the array of devices that are in the hands – or on the laps or desktops - of every user, allowing the author to focus on what matters most – the quality of that content.

Log in

Once you have logged into the platform, click on My Modules and Kando will present all modules that you have created, or that have been shared with you (personally or as a member of your organisation's publishing group).

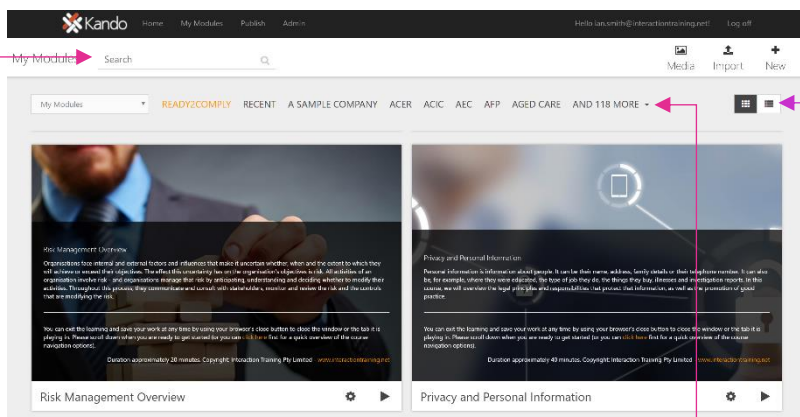
Finding an existing module

In My Modules, you will be able to access modules that you have created as well as any that have been made available to you (perhaps directly or because you are part of a publishing group both of which can be set up through each module's Settings options, which can be accessed from inside the module).

The most recent edited modules are displayed in tiles in the main interface (can be changed to List using the View buttons at top right).

As your library grows, search options will, of course, become more and more useful.

- You can filter to the ranges that have been set up (for example, our off-the-shelf ranges include ready2comply, ready2work, read4management and ready4retail). You may have also set up your own ranges, which you can do by simply entering a Range name (under Settings – Module Properties) inside each module.
- The **Search** pane at top left allows you to locate specific builds by typing as much or little of the module's title as you know. If you are not sure exactly what a module was called, try typing any part of a keyword that is likely to be included and Kando will present a menu of modules containing the alpha characters that you have entered.

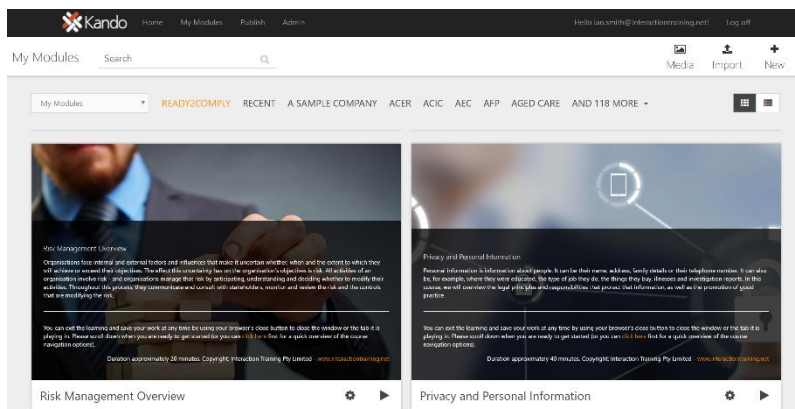


Module Properties

| | |
|-----------------------|-----------------|
| Title | Kando Demo (v1) |
| Range | Demo Content |
| Theme Color | #00156b |
| Secondary Theme Color | #180000 |
| Popup Type | Slide Up |
| Visibility | Publisher |
| Remark | - 75 % |

Cancel OK





3 important buttons that you will use all the time, Media, Import and New...

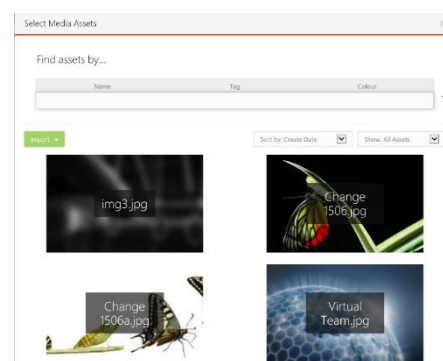
The Media Library

At left of the Import and New buttons, the Media button provides access to your library of assets that have been used in your modules along with other assets that have been imported but not necessarily used.

This Media Library is also automatically accessed whenever you seek to select a new image, audio or video clip to be added to a learning panel and will in such situations, filter to the asset type that is relevant (for example audio clips when the browse option is selected from a panel's Audio field).

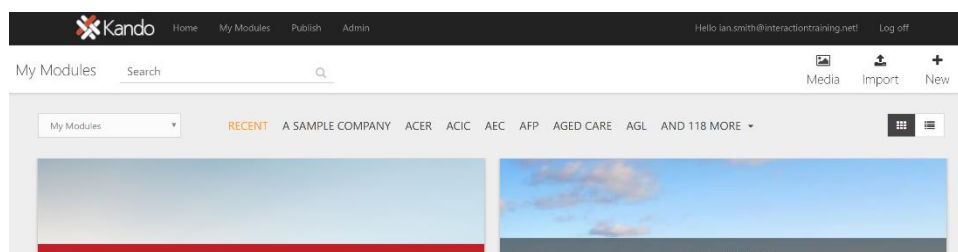
The media library is sorted by default by the date that the files were added to it, so the most recently added assets are added to the end (which is very handy to know if you have recently imported content and are looking for specific and relevant assets).

Inside the Media library, you can also find specific assets by Name or tags and you can use the Colour tab to search for images that map to a specific colour (perhaps for continuity or styling).



Import or New?

To the Right of the Media button are the **Import** and **New** buttons – your alternate starting points for creating new modules. Typically, it will be easier to start from an existing module and edit existing content – and getting to know the options for doing so is our strong recommendation.



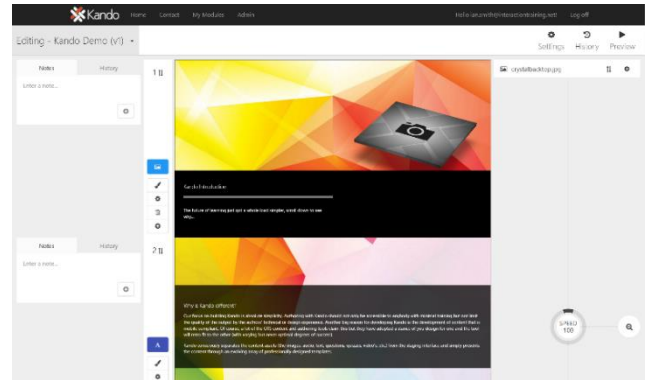
The Import button will allow you to create a new module by importing either Adrenaline modules, PowerPoint presentations or PDF files. Please note that if you have a range of existing modules built in a specific alternate tool you should ask Interaction about the option for an importer to be built to accelerate the conversion of same into Kando, almost certainly saving you valuable time and money while transporting you into the future of authoring!

Note: Importing will always do its best to recreate what exists in the source document such that it would work seamlessly within the Kando toolset, however it must be noted that the core goals of the Kando tool in establishing content that works seamlessly across all devices with the best possible outcomes will likely require some redesigning after the fact. One example is that formatting is stripped from the text as it will not port to an html front end well, but this formatting is reset by the fields in Kando and can be readily reset if required. The courses and text should obviously be thoroughly checked in a clean-up run post importing.

To edit an existing module, simply locate it My Modules and simply click it to open it in the Kando authoring tool. The changes you make are automatically stored as you make them so that your work is saved if you lose your connection or Log off, etc., at any time. Let's investigate editing now...

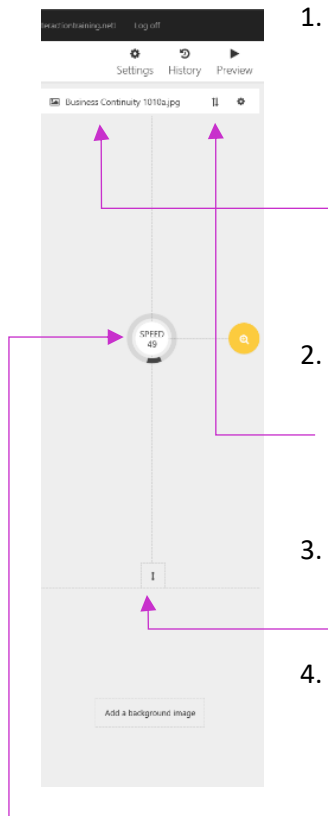
Parallax scrolling

The basic interface for the courses uses two layers that utilise the latest parallax scrolling interfaces. This means that you can load an image in the background and have that image display over multiple panes. In our example, the orange image is a single graphic that wraps between the first and second panes (a dotted line is displayed in edit mode across the image to the right of the View Notes green bar to indicate where one pane ends and the next begins). Adding a background image with parallax scrolling will create a visual impact. It can be used to reflect panes that align to the same topic and will take care of the assumed classic design challenge of feeling that you need to have a different image to go with every block of text. One excellent image can replace several lesser images that really do not add to the quality of the learning.



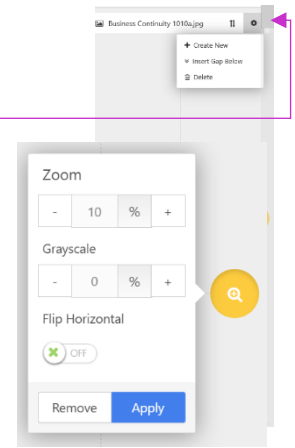
The pane at the right-hand side of the editing screen controls your background images and the parallax scrolling capability. If there is no background image, a button is displayed there allowing you to Add a background image (noting that you do not have to incorporate background images on every slide – sometimes less is more!)

When a background image is incorporated, Kando offers the following options:



1. Change the background image – simply click on the image name listed at the top of the pane to access your Media Library, which will provide access to all images utilised or loaded by your publishing group. If you used the importer to create your module, Kando will select and apply the highest quality image that appears to be attached to that text. One high quality image that tells the story will typically have better impact and more professional feel than several smaller images, and invariably makes the module more efficient to deliver to users. We recommend that individual imported images do not exceed 1.5Mb and the images you can load include standard file types (jpg, png, gif, etc.).
2. The button displaying two vertical arrows to the right of the displayed image name allows you to move the image using a drag action to any other pane. If the slide is close by, we recommend you use this option but if it is at the other end of your module you might find it easier to delete the background image and then re-select it elsewhere.
3. At the bottom of the background image pane is a double headed arrow that is used to **extend** the background image on the current slide over to adjacent panes – as many as you wish to allocate it to.
4. The speed dial in the middle of the pane allows you to adjust the speed at which the background image moves in relation to the user moving through the panes the image extends over. You can adjust the setting by simply dragging the black handle around the circumference – the lower the setting the slower the image will move in relation to the user scrolling up or down. A setting of 50, for example, would move the background image at 50% of the speed that the user scrolls. Typically look for a setting around 60% and fine tune from there.

5. To the right of the Move (background image) button is a button displaying a cog that allows you to Insert a new or delete the current background image from the slide(s) on which it is applied. There is also an option to Create a Gap below the current image allowing you to insert a new image into your stack.
6. The options under the magnifying glass button in the middle of the panel allows us to refine settings for the Background image. There options include:
 - a. Zoom – defaults to 10%, which adds a subtle zooming in of the image as the user transitions between panels;
 - b. Greyscale – can be increased up to 100% which will wash all colour out of the background graphic. This is a handy setting when you like the graphic, but the colour depth feels a little jarring. Also, at 100% greyscale the content box will pop more if you are using the theme colour as the back fill;
 - c. Flip Horizontal – simply flips the image left to right, which can be very handy depending on the layout of your background image.



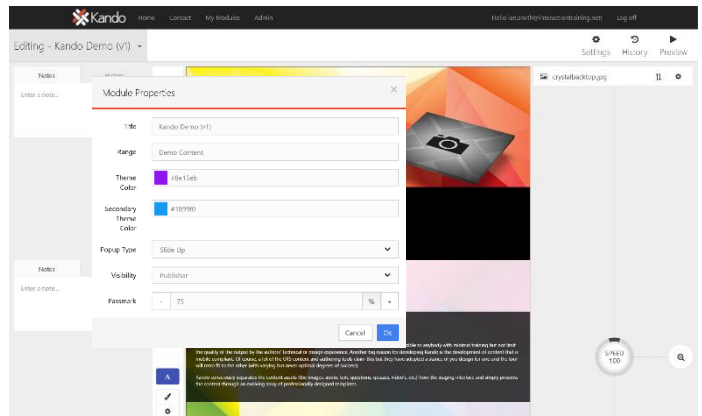
NOTE: Kando will resize images automatically when you upload them so it can use the appropriate sizes for different situations and apply optimal compression. The exception to this is PNG images (rather than JPG). While it will resize PNG's, compression on PNG's is lossless so they will always be bigger overall than a comparable JPG. Because of that as a rule we only use PNG's for small icons where we want maximum quality or when we need transparent areas in the image (e.g. when floating over another image rather than a solid colour with areas of the image that show through the background.) otherwise jpg's are usually much better for user download speeds especially for background images.



Pane (Slide) Design

The individual panes (or slides if you prefer) that make up your module are presented in the middle ribbon in the Kando interface.

Each pane utilises professionally designed templates made available to you from an ever-expanding library. The core of the Kando guarantee recognises that professionally designed templates will ensure that your work always looks sleek and modern and at the same time will seamlessly load accessible and legible content to users on the myriad devices. This covers devices and the web browser software that we use to deliver the modules that users have at hand today and into the future. And as styles trend over time, more and more templates will evolve to ensure the modernising of your content over time is as simple as you have ever hoped it could be – a simple matter of exchanging in single templates or families of templates. You will never again have to rebuild your portfolio.



If you have imported the content then Kando will pick the Core template type that it believes best suits, based on the assets that it finds, for example in the screen grab here the first slide uses a standard Text core template that is showing the text entered on an orange background – the orange colour is the theme colour, which will be set up for you based on the organisations dominant theme colour whatever that may be (and you can change that colour at any time by accessing the Setting options for this module).

If you have imported the content then Kando will pick the Core template type that it believes best suits, based on the assets that it finds, for example in the screen grab here the first slide uses a standard Text core template that is showing the text entered on an orange background – the orange colour is the theme colour, which will be set up for you based on the organisations dominant theme colour whatever that may be (and you can change that colour at any time by accessing the Setting options for this module).

In the Module Settings (select Settings after you have launched a module in Edit mode) you can set some very important basic options. Let's quickly run through these now.

A screenshot of the 'Module Properties' dialog box. It contains the following fields: 'Title' (Kando Demo (v1)), 'Range' (Demo Content), 'Theme Color' (a purple swatch labeled '#8e15eb'), 'Secondary Theme Color' (a blue swatch labeled '#1899f0'), 'Popup Type' (a dropdown menu set to 'Slide Up'), 'Visibility' (a dropdown menu set to 'Publisher'), and 'Passmark' (a numeric input set to '75' with percentage symbols on either side). 'Cancel' and 'OK' buttons are at the bottom right.

- Title – allows you to rename the module at any time;
- Range – allows you to group your modules into intelligent catalogues, for example all of your Change modules may be set to a Range name Change. Thereafter these modules will be displayed grouped together when you access Kando.
- Theme Colour and Secondary Theme Colour allows you to select the precise colours that can be applied to areas such as the background in text boxes (in the case of the primary Theme colour. This setting will help to ensure that your modules aligns to corporate branding requirements. Importantly, a single change here will be reflected throughout any existing pane elements that use the Theme colour in that module, so with one click you can brand up any module from our off-the-shelf ranges.
- Popup Type: We have created a variety of animation effects for when the system pops up an information box, for example the Correct and Incorrect response boxes after the user answers a question. You set the animation that you prefer here and that selection is applied to all popups in the module (so that continuity is assured).
- Visibility: This setting defines who can access and edit your course. There are three settings being Private (only you can edit), Publisher (only people within your group (organisation) who have access to Kando can edit it, Public (you are sharing the edit permissions with anyone who can access the instance of Kando that you are signing into).
- Passmark – You can set a required passmark. For scorm LMS installations users would then be required to achieve this passmark to attain completion. Without a passmark they simply need to arrive at the last slide in the module.

Let's now investigate the design options for the various panel templates that Kando offers... You will note that at the left side of each pane is a series of buttons.

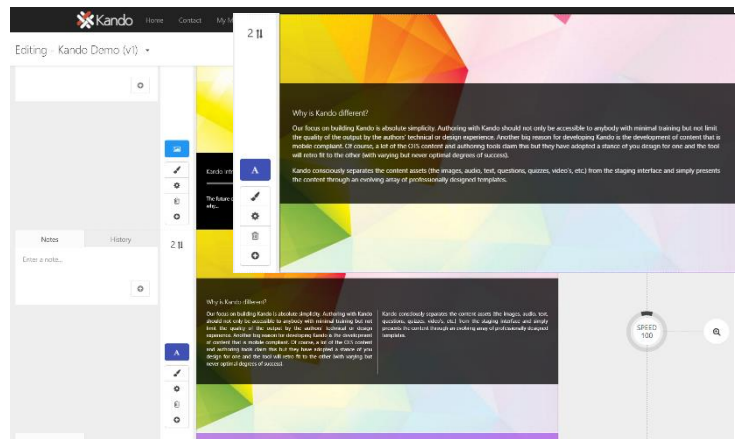
The first two buttons (the Template Selector and the Content Fill buttons) allow you to select the template design settings that are core to the presentation of your content on this pane. The panel in this example course has set the text to display in the middle of the panel with white text on a black background.

The third button allows you to access and edit the content that is displayed on that pane.

The last two buttons allow you to delete the current pane and Add will insert a new pane below the current one.

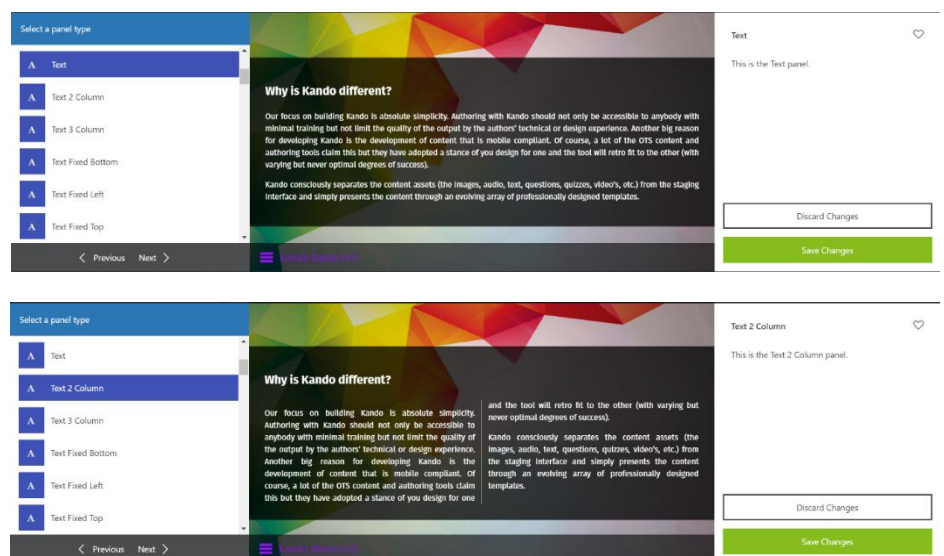
Let's start working through how you can select and edit the design options...

The Template Selector in this example shows a blue button with an A icon, indicating that the core template currently selected is a text-based template. Your first decision revolves around selecting the preferred template for showing the content on this pane. To do so, you simply click on that Template selector button and the interface will switch to preview mode...



Clicking on the Template button opens the template selector and highlights the currently selected sub-template (in this instance the Text template which places the text in the middle of the pane as well as pre-designed animations to display it). The blue buttons all indicate alternate sub-templates within the same family of templates that you can select from. As a rule of thumb, you should stick within the same coloured icons when using this option as they will be the most likely to map a solution that works to the content assets being presented.

Let's see what happens if we select the Text 2 Column option.

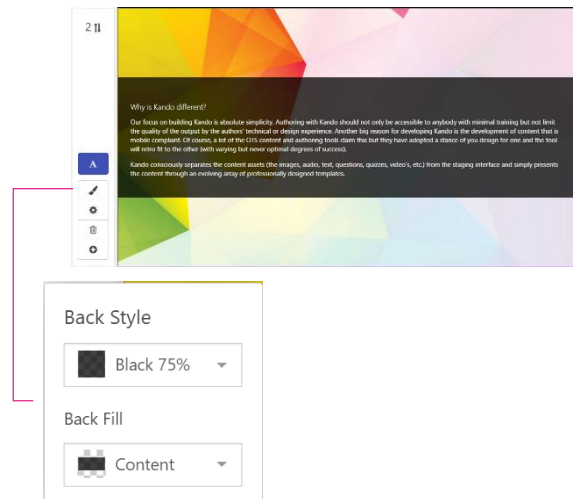


The text has been redisplayed in two columns, still on a black background. You can try more options and then Save the one you like or discard the changes if you preferred the original. We will save the changes to 2 columns in this instance.

The new sub template has been applied to this panel. With the basic template style selected, we can fine tune its presentation using the Content Fill button (which displays a paintbrush icon) directly below the Template selector.

The Content Fill option will display two simple settings...

1. Back Style allows us to select whether the back fill uses Black, White or the Theme colour (as set in the module Settings pane). There are options for each of these base colour settings to select 100% fill, which will completely hide the panel background image behind, or varying setting of 75%, 50%, 25% or completely transparent.
2. Back Fill has two options – you can set the fill to either cover the whole panel or set it to wrap to the text that you have entered.



Editing text and images on a panel content

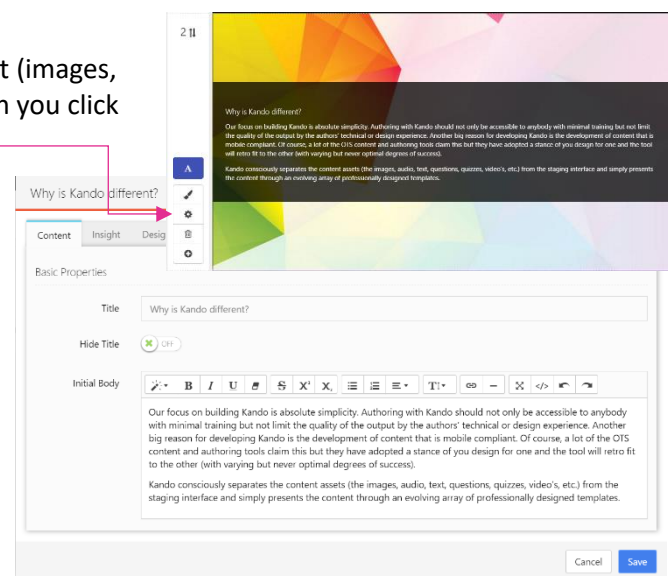
The options for fine-tuning the design and editing the content (images, multimedia clips, text, etc.) on each pane are presented when you click on that panel's Content button.

These options will be very similar in layout no matter which template style you have selected, however the individual options presented will be tailored to suit the content in each case.

Whatever the template though, all will offer the same sequence of tabbed pages, being Content, Insight, Design and Advanced, with the Content tab selected by default.

For a basic text-based template where there is no additional text to be displayed on the same pane, this Content tab will offer access to just the 'Basic Properties', which are:

- A field for the title
- An option to hide the title when the slide is rendered for end users; and
- An Initial Body field that contains your body content and can be formatted using common options found in most word processors but filtered to those options that can be displayed through all the common web browsers available on a plethora of devices.



If you are building a panel that has more than just a single block of text, such as if you are including a set of steps in a process and wish to show one step at a time, we recommend that you switch the core template from the Text option to Multi-Point Panels. Let's investigate by opening the Content editing options for a panel further down our module that is currently utilising a Multi-Point panel...

This slide uses a Multi-Point Panel with the sub template type set to Multi Card View.

The image illustrates the creation and use of a Multi-Point Panel in a software interface. It shows the selection of the 'Multi Card View' template, the configuration of individual points (Peter, Helen, Clive) with their respective images and text, and the final presentation where users can interact with the cards to view detailed information.

It displays the situation of three people as the opening to a case study. Rather than put each on separate slides or try to compress them all onto one which would require an extensive block of text, the Multit-point panel template allows us to display the situation for each individual separately (of course it could be three people, three steps, three buttons, three icons, etc.). The panel can also be set to display as many steps as you require by simply adding them in the P1, P2, P3, etc. list that you build directly below the Basic Properties in the Contents editor window.

In our example, P1 is the first point. Peter is in the title; an image of Peter has been added in the image field for that point and the relating body text is entered into the Text box for that point. The corresponding entries for Helen are shown in P2 below and Clive is thereunder (not included in this grab).

When the end user accesses this panel and clicks on Peter, the Text block is displayed as per this grab, with a nice animation when the two other points are selected.

What might this same content look like if we select an alternate Multi-Point Panel sub-type?

Let's change to the Slit Slider top show that two clicks can totally change the look and feel without touching the content...

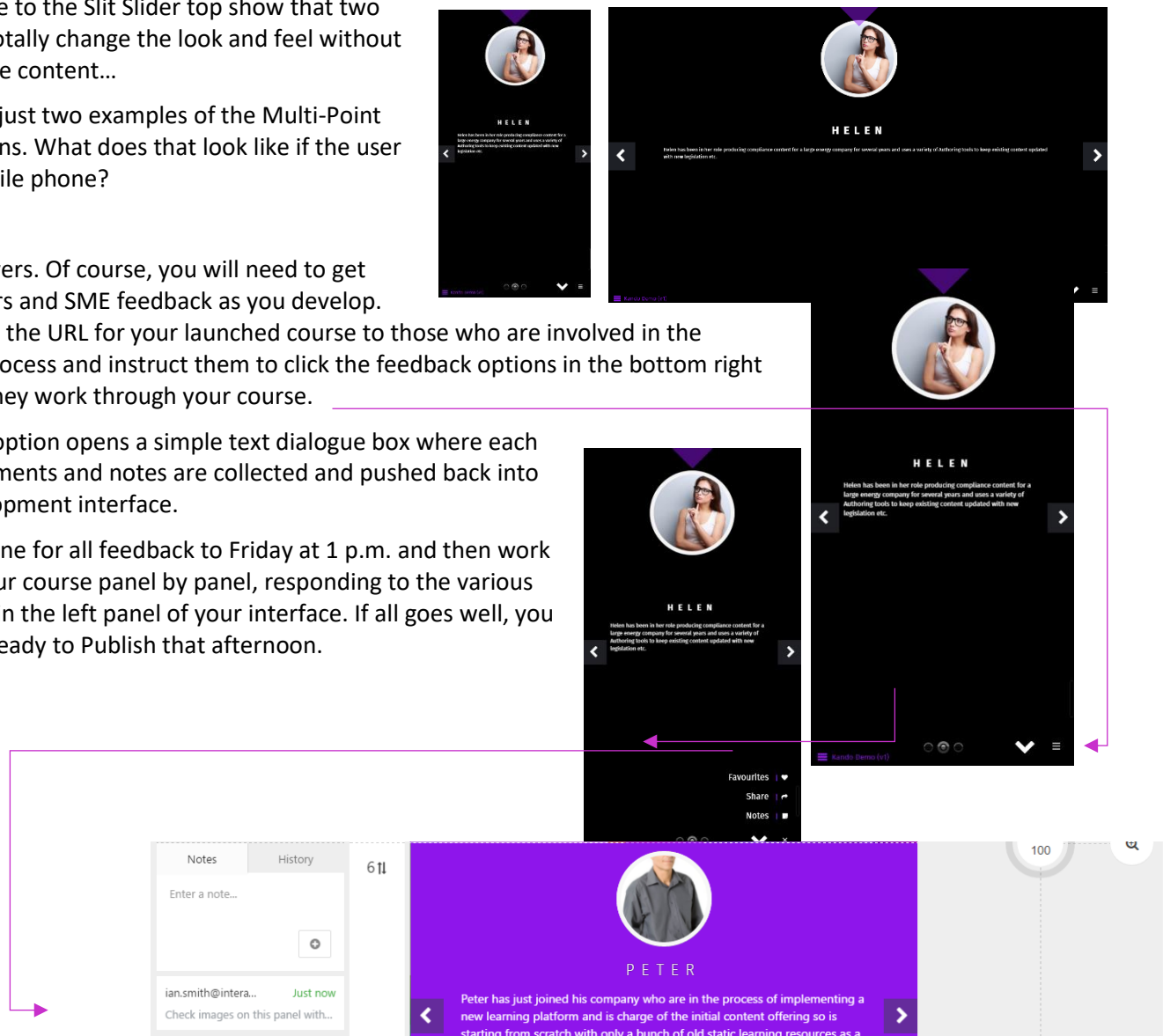
And that is just two examples of the Multi-Point Panel options. What does that look like if the user is on a mobile phone?

Kando delivers. Of course, you will need to get stakeholders and SME feedback as you develop.

Simply pass the URL for your launched course to those who are involved in the approval process and instruct them to click the feedback options in the bottom right corner as they work through your course.

The Notes option opens a simple text dialogue box where each user's comments and notes are collected and pushed back into your development interface.

Set a deadline for all feedback to Friday at 1 p.m. and then work through your course panel by panel, responding to the various comments in the left panel of your interface. If all goes well, you should be ready to Publish that afternoon.



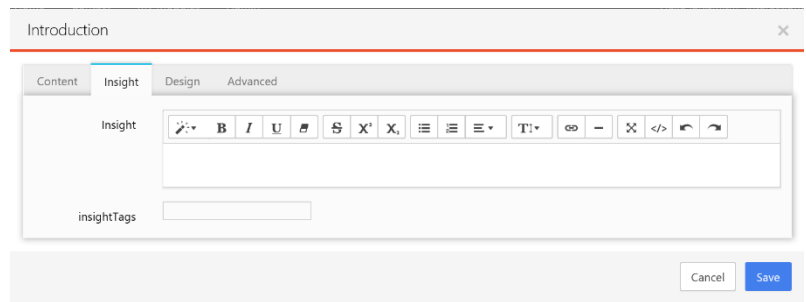
The Insights tab

When you build a modern eLearning module ideally the content should be adaptive so the module is teaching the user what they need to know (filling the gaps) rather than just forcing them to click through to the end, perhaps incorporating a bank of questions or interactions to reinforce the message.

In Kando, we start from 'Insights' that extract the key points a user needs to know to fully grasp a concept - and we build out from there. From the Insight, the author can provide options to extend or confirm understanding. As is required by each learning item, the author can implement any combination of the following paths, in any order. So, the end user might have the option (or be pushed) to any combination of the following:

- Elect to (or be compelled to) access the associated background information / relevant learning options, which might include, for example, a bank of e-learning slides also built in Kando using all the normal interactions that we know and love, course enrolment, links to web pages, resources and media, etc.
- User acknowledgement (simple click button to confirm your understanding and agreement to abide by what has been covered in this course and any resources).
- Assessment: Option to attempt a randomised assessment with graded difficulty questions that will gauge and confirm their current depth of understanding of the Insight. If they pass and feel confident that they understand the content they can be seamlessly approved and allowed to move on to the next learning Insight - or get back to their job.
- If they do not pass the assessment, they can be guided to any background information / relevant learning options (see initial bullet). They might also be offered a new attempt at the assessment (perhaps not allowed within X days).

We can think of each of these Insight centred blocks as individual Pearls (of wisdom!) that are, importantly, stored separately. Kando allows the individual pearls to be easily strung together and re-used in any and many combinations during the Publishing phase. Bite size development that allows the linking of insight centred courses into strings that reflect conventional extended courses – the best of both worlds.



The Advanced tab



The Advanced tab offers options that were added for specific custom requirements. All options presented here must be used with caution and only after appropriate testing – and, as these options will make the panel and panels around them operated different to the standard, we recommend that you add a footnote on what you apply and why into the Notes for the current panel, to explain for future editors and people supporting the course:

- **Is Flow** is selected by default – when selected, this slide follows the previous slide in a clean natural movement down through the learning ribbon. Turning it sets the animation to appear to place this slide over the top of the previous slide when the user scrolls down to it.
- **Has Back Block** is selected result in the user not being able to scroll backward through the course once they get to this side - used for example, when they reach a quiz and you don't want them to be able to go back to the content.
- **Text Colour** overrides the default colour changes and forces the slide text to the chosen colour (it will automatically switch to white text on a black background for example but sometimes you have text floating over an image with a semi-transparent background that means you want to force the text to a higher level of contrast).
- **Dwell** sets the current panel to stay on display when the user moves to the next panel (you might for example overlay a footnote in a Centred responsive text box by setting this value to 1 and setting up the footnote on the next slide).
- **Back image** is used to force a fixed image at 100% width and height in the background on this slide. It will cover the standard parallax background image (obviously you would normally have the background image layer scrolling behind – this field has been used for some specific effects, for example you can set up background layered images using a semi-transparent image here displayed over the parallax effect back image set in the right hand column).

Creating Assessments

To assess understanding, we have built assessment options into Kando (keeping in mind that the overall passmark is set in the module settings):

1. A series of Question templates designed for building one question per slide
2. A Quiz template for building a series of questions into a single slide, complete with a review slide at the end

When you launch the Content dialogue box for a question a series of fields are displayed including:

- A title to be displayed.
- Separate fields for the question itself, correct, partial correct and incorrect responses (if you wish to set up specific responses if the user clicks on a specific option, select the Specific Responses check box below).
- Simple options for weighting the question, allowing the user to retry, select multiple correct options, etc.
- At the bottom are the fields for entering the choices being presented to the user and select which ones are correct from those that are incorrect.

The image shows a two-part interface. The top part is a preview of a presentation slide titled 'Question 1' with a purple header. The slide content asks 'What makes Kando different' and lists four options: 'It's easy to use', 'It's easy to use and fast', 'It's easy to use fast and outputs quality content', and 'It's easy to use, fast and outputs quality responsive content'. The bottom part is the 'Question 1' configuration dialog box. It has tabs for 'Content', 'Insight', 'Design', and 'Advanced'. The 'Content' tab is active, showing 'Basic Properties' with fields for 'Title' (set to 'Question 1'), 'Hide Title' (set to 'OFF'), and 'Initial Body' (with a rich text editor). Below this is the 'Question Properties' section, which includes a warning icon and text: 'Users will be able to select one answer and receive a correct or incorrect response.' It also has fields for 'Weight' (set to 1), 'Allow Retry' (checked), 'Specific Responses' (unchecked), and 'Multiple Select' (unchecked). The 'Question Properties' section also contains four response options with icons: a question mark for the question text, a checkmark for 'Well done, that's correct!', a partial checkmark for 'Well done, that's partially correct!', and an X for 'Sorry, that's incorrect, please try again.' Below these are four answer choices (A1, A2, A3, A4) with their respective text and 'Correct' checkboxes. A5 is a blank field. The 'Correct' checkboxes are checked for A1 and A4. At the bottom of the dialog are 'Cancel' and 'Save' buttons.

So, through the simple, fast development of a single module we now deliver the micro version of the knowledge (through the Insight), the full explanation (proceeding slides which may contain eLearning, resource or enrolment links, etc.), and a seamless option to confirm understanding (through the assessment).

Importantly, the author sets the acceptable combination of above adaptability options including when they can be presented to the user, a decision based on the gravity of the sign-off requirement and the combination of options established. The key point here is that the learning and approval cycle for granular 'Insights' can be personalised to both the gravity of the content AND the existing knowledge / capability of each individual user.

Kando tracks access and progress through those items and gauges the standard of their completion by the adaptive path that the user followed. Of course, at any time thereafter the user can quickly return to the Insight for an instant defined overview (for example: here are the 9 steps to safe lifting), they can review any attached resources or learning and/or re-attempt / freshen any required assessment.

The model so far:



- 1. The user always starts at the Insight*
- 2. The author can then allow them to access the assessment or take them straight to the learning – if they pass the assessment they can elect to view the Explain components or more likely go straight to sign off / if they fail the assessment they are taken to the Explain step.*
- 3. They always end at sign off and review*